



2025/2026 CATALOGUE



PACIFIC ART STONE™

Set Your Future in Stone





PACIFIC ART STONE™

Set Your Future in Stone

Since its founding year, 2006, Pacific Art Stone Inc. has been dedicated in its mission to become the leading manufacturer and importer of natural and manufactured stone veneer in Canada and the Western United States. With an unwavering reputation for high quality products and outstanding customer service, Pacific Art Stone continues to leverage its knowledge, talent, and passion for creating authentic stone veneer products and accessories to add value and beauty to our clients' projects, whatever scale they may be.

OUR SHOWROOM

Pacific Art Stone's Design Center offers a quiet and helpful place to coordinate and plan your next project. Our staff are always on hand to assist in any way necessary.

8585 123 Street
Surrey BC V3W 6E2
604.590.5999
sales@pacificartstone.com

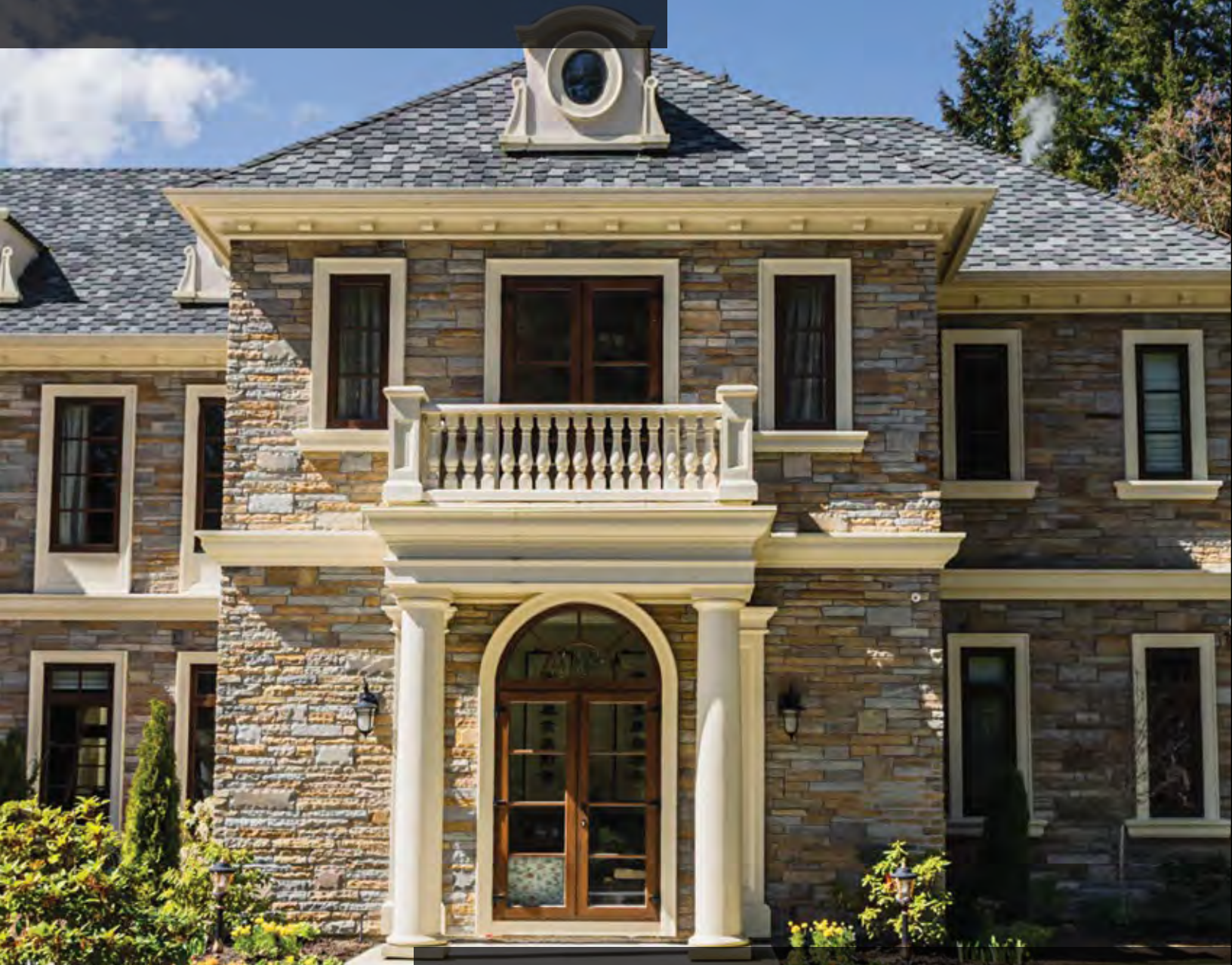
HOURS

Monday to Friday: 8:00 – 4:00
Saturday: 8:00 – 1:00

For more information and a full display of all our stone collections, please visit our website: pacificartstone.com

DISCLAIMER: Please note that natural stone is unique and can vary between orders. Printed photos may not look exactly like the final product. Warehouse hours may differ.

Altera Collection



The Altera Stone Collection is a collection of natural and elegant sandstone, quartzite, and limestone products with split and cleft textures and finishing that adds warmth and class to any project. The superior quality and workmanship of this collection will ensure your project remains beautiful for years to come. The Altera Stone Collection is also designed to ensure that colours and profiles can be seamlessly blended to allow additional customization necessary for the unique requirements of your project.



AUTUMN LEDGE



BLACK CANYON LEDGE



BRYCE CANYON LEDGE



CARMEL LEDGE

[3]



CASCADIA LEDGE



HARBOUR LEDGE



MESA CREEK LEDGE



ROCKY MOUNTAIN LEDGE



SHADOW VALLEY LEDGE



BRYCE CANYON FIELD



CARMEL FIELD

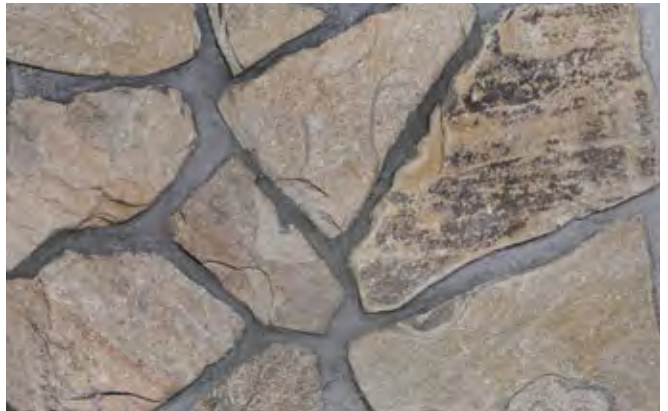


CASCADIA FIELD

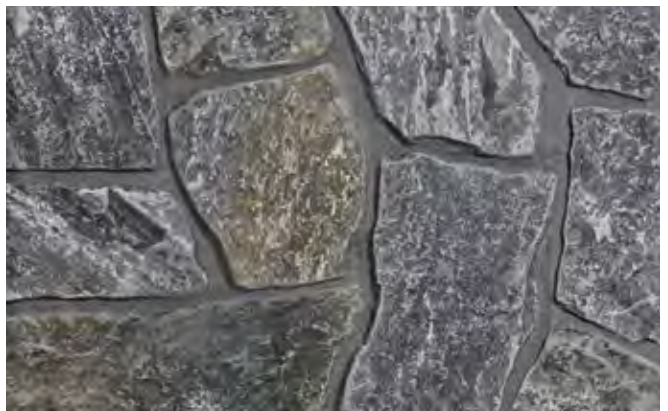
[4]



SHADOW VALLEY FIELD



MESA CREEK FIELD



ROCKY MOUNTAIN FIELD



SHADOW VALLEY FIELD



BLACK CANYON CASTLE



BLACK CANYON CASTLE

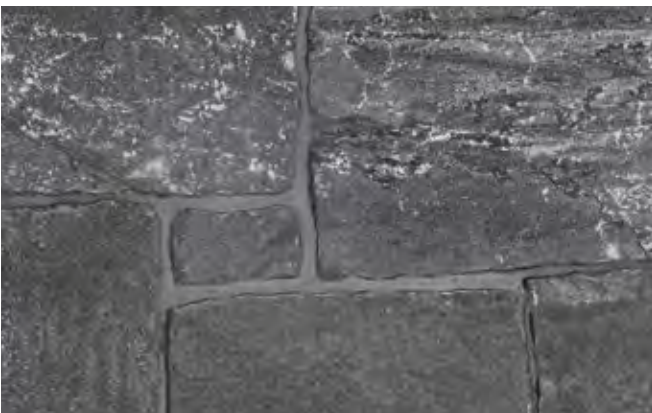
[5]



BRYCE CANYON CASTLE



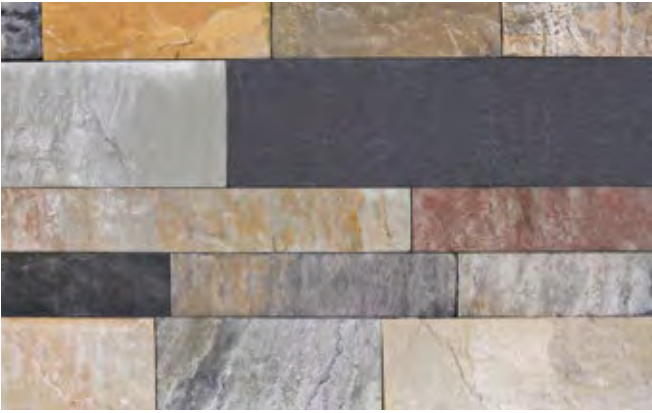
CASCADIA CASTLE



ROCKY MOUNTAIN CASTLE



SHADOW VALLEY CASTLE



BRYCE CANYON HONED LEDGE



CARMEL HONED LEDGE



CASCADIA HONED LEDGE



ROCKY MOUNTAIN HONED LEDGE

[6]



SHADOW VALLEY-ROCKY MOUNTAIN LEDGE BLEND



BLACK CANYON SAWN-CUT LEDGE



BRYCE CANYON SAWN-CUT LEDGE



CARMEL SAWN-CUT LEDGE



CASCADIA SAWN-CUT LEDGE

[7]



HARBOUR SAWN-CUT LEDGE



MESA CREEK SAWN-CUT LEDGE



SHADOW VALLEY SAWN-CUT LEDGE



BRYCE CANYON SAWN-CUT LEDGE





AUTUMN ASHLAR



BLACK CANYON ASHLAR



BRYCE CANYON ASHLAR



CASCADIA ASHLAR

[9]



CARMEL ASHLAR



MESA CREEK ASHLAR



HARBOUR ASHLAR



ROCKY MOUNTAIN ASHLAR



SHADOW VALLEY ASHLAR



BRYCE CANYON ESTATE



BLACK CANYON ESTATE



BRYCE CANYON ESTATE

[10]



SHADOW VALLEY ESTATE



CARMEL LINEAR BRICK



CASCADIA LINEAR BRICK



HARBOUR LINEAR BRICK



[11]

ROCKY MOUNTAIN LINEAR BRICK



ROCKY MOUNTAIN LINEAR BRICK



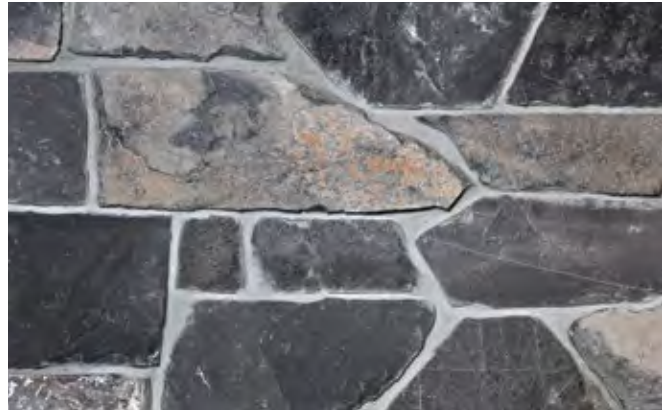
SHADOW VALLEY LINEAR BRICK

Westlakes Collection

The Westlakes Stone Collection is designed to be reminiscent of the beauty of the Pacific Northwest, from the windswept beaches of the coast to the sprawling mountain ranges of the Rockies, and everything in between. This collection strives towards our ideals of bringing beautiful, affordable, and premium quality building materials to the marketplace without compromise. The Westlakes Collection is composed of a variety of quartzite, granites, marbles, and limestones, and we have meticulously honed the design of this collection to ensure that it is suitable for a wide array of projects, trends, and tastes.



ARROW



CARIBOO



COLUMBIA



CRESCENT

[13]



CRYSTAL



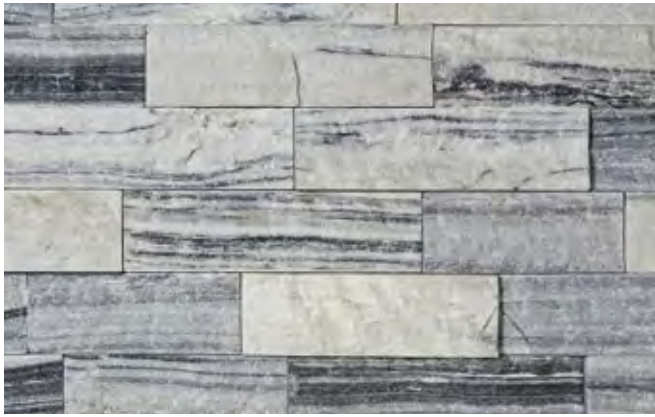
FROST



STORM



SUNRISE



ARCTIC RIVER



BLACK RIVER



BLUE RIVER



TERRA RIVER

[14]



DOVER



SHORELINE



BLACK LIME



TITANIUM QUARTZITE





Sophia Collection

The Sophia Collection is a collection of premium and stately stone veneers that echo classic Old-World stone architecture. Comprising high-quality limestones, travertines, and granites, this is an unparalleled collection of natural stone. Designed to give any project an elegant and majestic vibe, these products are among our finest and will turn your project into a showstopper.



CREAM SPLIT-FACE



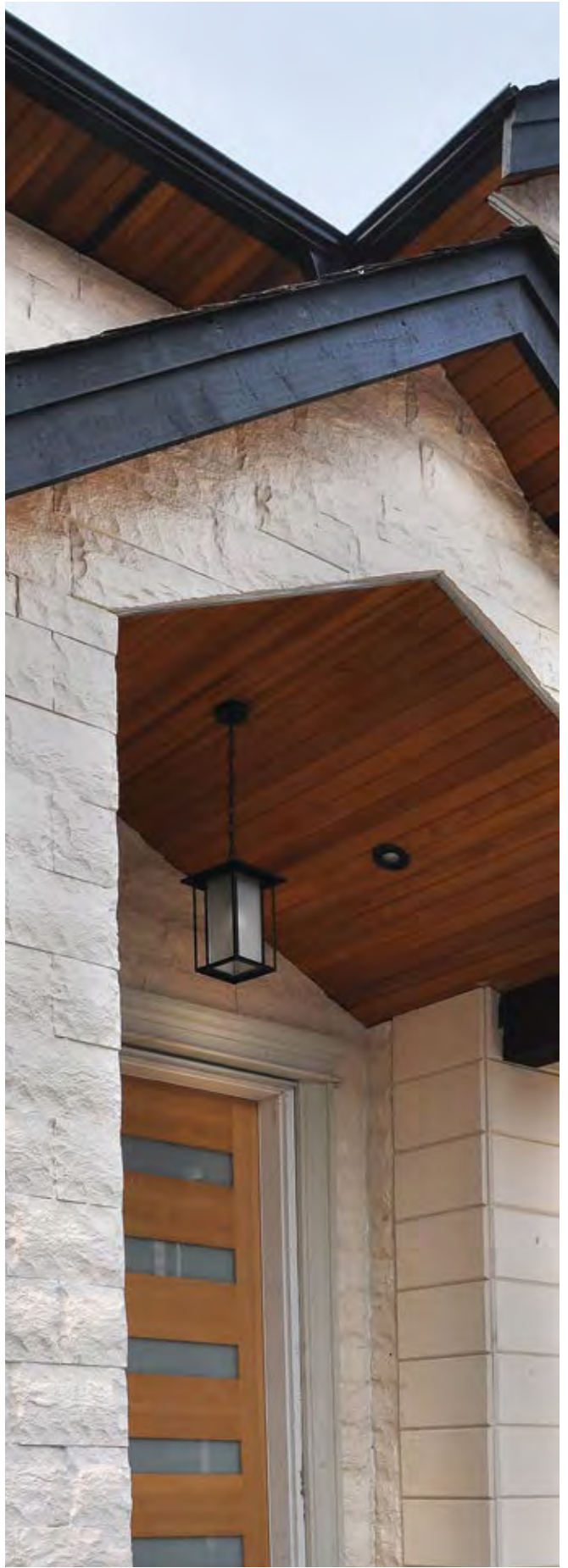
CREAM WHITE



HARBOUR



IVORY VEIN



CREAM SPLIT-FACE



IVORY TRAVERTINE



OLIVE GREEN

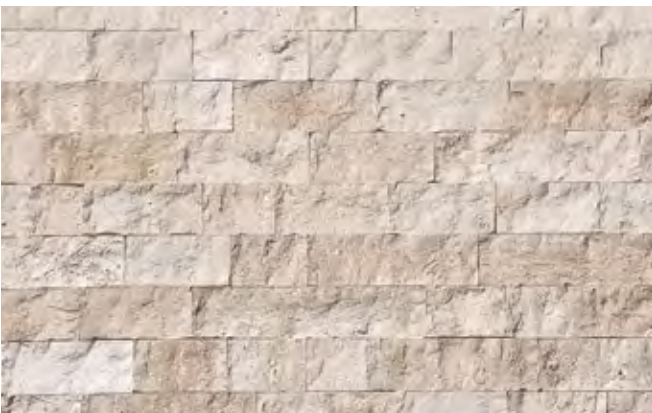


EBONY TRAVERTINE

[18]



TUNDRA GREY



IVORY TRAVERTINE



CREAM WHITE



NOCE TRAVERTINE



SILVER TRAVERTINE



SILVER TRAVERTINE

Battersea Collection



The Battersea Collection is a collection of wire-cut and reclaimed brick veneer. Inspired by British and New World architecture, this collection is designed to bring warmth, elegance, and class to any project. Classic colours, beautiful textures, and of the highest quality, this collection continues our goal of proving that no client needs to compromise when it comes to quality and affordability.



ARROWSMITH



ATHABASCA



BONNEVILLE



GEORGIAN WHITE

[21]



SHELBOURNE CHARCOAL



SILK WHITE



SILVER ASH



SNOWFIELD



TUDOR RED



VICTORIAN GREY



ARGYLE RED



CAPE BRETON GREY

[22]



BONNEVILLE



CAVENDISH BURGUNDY



INVERNESS WHITE



38

Highlands Collection

The image shows a modern building's exterior. A central pillar is covered in a light-colored, stacked stone veneer. To the left is a door with vertical wooden slats. To the right is a tall window with black frames and green-tinted glass. A small, conical evergreen tree is planted in front of the stone pillar. The overall aesthetic is clean and contemporary.

The Highlands Collection is our most approachable and easy-to-install collection. Comprised of natural stones from all over the world, this collection is designed to be very affordable to install without compromising on quality in any way. These products feature a panel format for quick and easy installation and come with 90-degree corners manufactured to our specifications to ensure a pristine finish.



3D WHITE



ARCTIC



BLACK MOUNTAIN



BLACK QUARTZITE WATER

[25]



BLUE CREEK



BLUE MARBLE



3D WHITE



HONED SAHARA



MAHOGANY



MANHATTAN

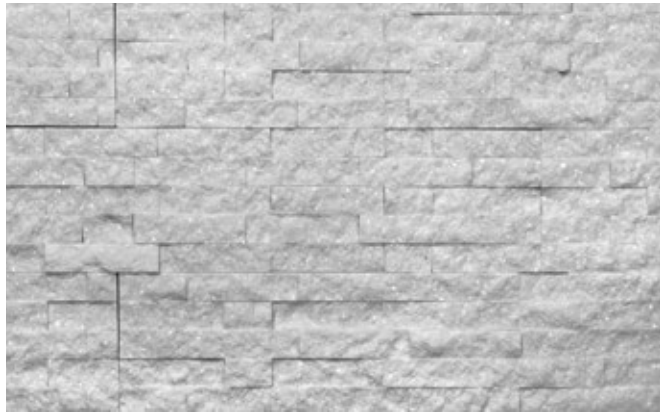


MIXED SAHARA

[26]



MAHOGANY



PURE WHITE



SAHARA



SHADOW BLACK LIME



TITANIUM QUARTZITE



VANCOUVER NIGHT



WINTER SUN

[27]



WOODEN WHITE



WOODEN WHITE SPLIT



ARCTIC WHITE

Phoenix Mountain Collection

The Phoenix Mountain Collection is designed to offer an affordable alternative to an array of manufactured stone products in today's marketplace. Our most popular collection, we continue to build on the success and prevalence of the Phoenix Mountain Collection with new colours and profiles each year, ensuring it remains contemporary and stylish while keeping the product quality, colour, and specifications up to the high standards that our clients expect.



ALABASTER



ANTHRACITE



BIRCH



BOW VALLEY

[29]



HOYA



ISLAND SANDS



IVORY CLIFF



MIDNIGHT STACK



MOJAVE



MONARCH



PINE



RUSTIC LEDGE



SILVER SUMMIT



SMOKE STACK



STRATHCONA



WILLIAMETTE

U.S. STONE

INDUSTRIES

Historically used as foundations and cornerstones, natural stone connects us to another time and place. The evolution of design and construction has transitioned natural stone from a structural unit to a featured design aesthetic. Today, there is an abundance of cladding materials available but few more sustainable than natural stone. US Stone Industries continues to lead the advancement of natural stone use by providing cladding that is lighter weight, sustainably derived and just as durable as the historic building stone.

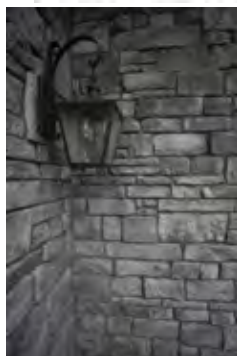
With roots extending back to the 1930s, US Stone Industries has grown into one of the premier natural stone quarriers & fabricators in North America. From custom hand-carved stone to simple building stone veneer and hardscaping products, US Stone Industries provides exceptionally crafted natural stone for designs of any size. Pacific Art Stone is proud to be a West Coast distributor of this beautiful product.



Pacific Art Stone is proud to be the West Coast distributor of the ProVia Stone Collection. ProVia Stone looks and feels like the real thing because we handcraft each mold to capture every detail and depth of natural stone. Deep shadow lines combined with authentic coloring produce dramatic effects in all our manufactured stone products. To achieve this, we select natural stones from unique geographic regions for every master mold and use only raw pigments and oxides for rich color. Additionally, instead of appearing only on the surface of stone faces, our colors permeate throughout the entire stone, giving each and every manufactured stone a realistic look with hues that last for years, even for exterior uses.



[31]



Accessories



GRANITE POST CAP

Available in Lunar Pearl, and Whistler Grey (shown);
24", 28", 32"



ALTERA SILL

Available in Bryce Canyon (shown), Shadow Valley, Cascadia, Rocky Mountain, and Mesa Creek



GRANITE SILL

Available in Lunar Pearl (shown), and Whistler Grey



ALTERA TRIM

Available in Bryce Canyon, Shadow Valley, Cascadia, Rocky Mountain (shown), and Mesa Creek



GRANITE TRIM

Available in Lunar Pearl (shown), and Whistler Grey



ALTERA WALLCAP

Available in Bryce Canyon, Shadow Valley (shown), Cascadia, Rocky Mountain, and Mesa Creek



GRANITE WALLCAP

Available in Lunar Pearl, and Whistler Grey (shown)



**WHISTLER GREY POST CAP /
CASCADIA LEDGE STONE**

Flooring



BLACK WAVE



CASCADIA



MYSTIC GREY



WHISTLER GREY



ROYAL BLACK



SILVER GREY



SILVER GREY BRUSHED

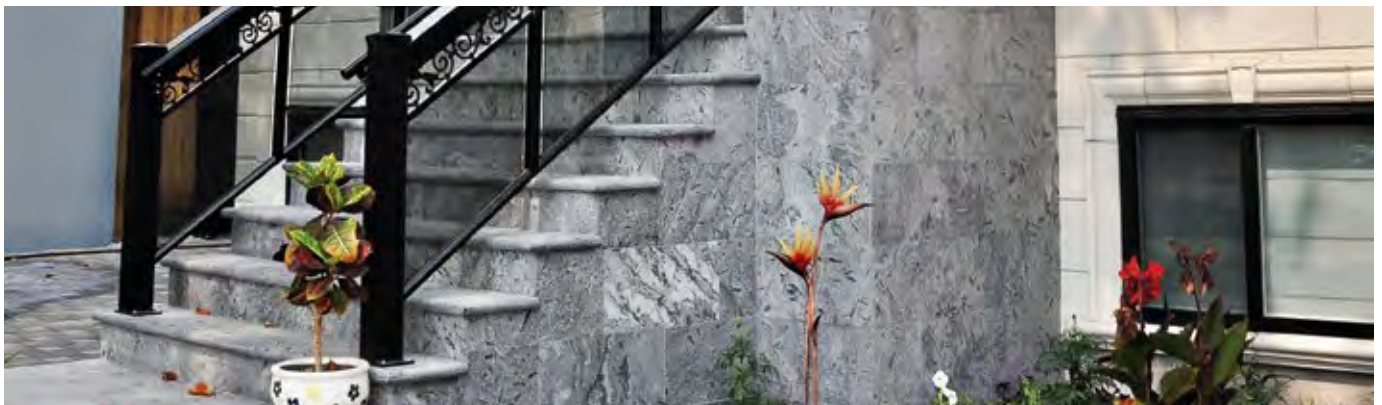


VICTORIA GREY



WHITE MARBLE

[33]



SILVER GREY

Specs

Altera Collection

SIZING

Length: 6"-22" on average

Width: 2"-10" on average

Thickness: 0.5"-1.25" on average

Packaging: Between 210 and 230 sq. ft. per crate depending on profile.

Weight: 9-14 lbs per sq. ft.

MATERIAL

Quartzite and Sandstone

SUBSTRATES EXT/INTERIOR

- Fully cured concrete (28 days min)
- Masonry Brick
- Regular Brick
- Cement Mortar
- Exterior grade plywood with wire lath
- Cementitious Backer Board

Westlakes Collection

SIZING

Length: 4"-24" on average

Width: 4"-12" on average

Thickness: 0.75"-1.4" on average

Packaging: Approximately 160 sq. ft. per crate

Weight: Between 9.1-13.7 lbs on average

MATERIAL

Quartzite, Sandstone, Granite, Limestone, and Marble.

SUBSTRATES EXT/INTERIOR

- Fully cured concrete (28 days min)
- Masonry Brick
- Regular Brick
- Cement Mortar
- Exterior grade plywood with wire lath

Sophia Collection

SIZING

Length: 4"-24"

Width: 4"-12" on average

Thickness: 0.75"-1.4" on average

Packaging: Varies

Weight: Between 9-12 lbs on avg

MATERIAL

Limestone

SUBSTRATES EXT/INTERIOR

- Fully cured concrete (28 days min)
- Masonry Brick
- Regular Brick
- Cement Mortar
- Exterior grade plywood with wire lath

WATERPROOFING

In areas that may be affected by efflorescence or unusually high moisture, it may be necessary to coat the substrate prior to installation with a waterproofing compound.

LAYING

We recommend two techniques for bedding these stones:

- Classic (promptly laid wet mortar)
- Contemporary (using synthetic adhesive)

Note: Using the contemporary method is recommended for installation of stones with a consistent thickness of 20mm or less to achieve the best results. For light-coloured stones, a light-coloured adhesive is recommended.

SURFACE PREP

It is recommended that the slab to which the mortar is going to be applied be free and clear of all dust and debris. It is vital to ensure the surface is clean to enable a good bond to take place between the mortar and concrete base.

MORTAR COMPOUND

Recommended Mix is:

- 3 parts blended coarse wash sand
- 1 part Portland Cement
- 1 part clean water
- Bonding Agent

Bonding Slurry Compound:

- Cement and water mixed into a workable paste, or;
- Cement and bonding agent (SBR-based) mixed into a workable paste

[34]



ALTERA BLACK CANYON CASTLE

Brick Collection

SIZING

Flats: 240 mm x 60 mm

Corners: (174 mm + 50 mm) x 60 mm

Packaging: Variable (5.35–9 sq.ft. per box)

Thickness: 11 mm

Weight: 3.5–4 lbs per sq.ft.

MATERIAL

Fired Clay

TYPE OF APPLICATION

Adhesive Exterior Application: A flexible latex-based mortar system suitable for the stone is recommended.

Adhesive Interior Application: A thin-set mortar for the stone is recommended.

SUBSTRATES EXT/INTERIOR

- Fully cured concrete (28 days min)
- Masonry Brick
- Regular Brick
- Cement Mortar
- Cement Board (interior only)
- Gypsum Plaster (10' height maximum) without wire lath
- Gypsum Wallboard (10' height maximum without wire lath)
- Exterior grade plywood with wire lath
- Cementitious Backer Board



HIGHLANDS WOODEN WHITE LEDGE

Highlands Collection

SIZING

Flat Panels: 6" x 24"

Corners: 6" x 12" x 6"

Packaging: 5–6 pcs per box/180–432 per crate

Thickness: 0.75"–1.25"

Weight: 6–9 lbs per sq. ft.

MATERIAL

Quartzite, Marble, Sandstone, and Limestone

TYPE OF APPLICATION

Adhesive Exterior Application: A flexible latex-based mortar system suitable for the stone is recommended.

Adhesive Interior Application: A thin-set mortar for the stone is recommended.

SUBSTRATES EXT/INTERIOR

- Fully cured concrete (28 days min)
- Masonry Brick
- Regular Brick
- Cement Mortar
- Cement Board (interior only)
- Gypsum Plaster (10' height maximum) without wire lath
- Gypsum Wallboard (10' height maximum without wire lath)
- Exterior grade plywood with wire lath
- Cementitious Backer Board



SILK WHITE

Phoenix Mountain Collection

TECHNICAL DETAILS

Compressive Strength: 2500 PSI–3000 PSI (UBC No. 26-10. 1 and 1V)

Tensile Strength: 600 PSI (ASTM-C190)

Water Absorption: 13%–15% (UBC No. 32–12)

Thermal Resistance: R = 1.24 (using lightweight aggregate) ASTM-C177-71

Shear Strength: 120 PSI to 130 PSI (ASTM-C482)

Fire Rating: Zero flame spread. Zero smoke. Zero fuel.

Freeze/thaw: Less than 1% (ASTM-C67- 83)

Weight: approximately 6–12 lbs per sq.ft.

SIZING

Length: 4"–16" on average

Width: 4"–12" on average

Thickness: 0.75"–1.4" on average

Packaging: Between 8–12 sq. ft per box. Approximately 240 sq. ft. per pallet.

MATERIAL

Cement, aggregate, water, admixtures, and colour

TYPE OF APPLICATION:

Adhesive Exterior Application: A flexible latex-based mortar system suitable for the stone is recommended.


Adhesive Interior Application: A thin-set mortar for the stone is recommended.

SUBSTRATES EXT/INTERIOR

- Fully cured concrete (28 days min)
- Masonry Brick
- Regular Brick
- Cement Mortar
- Cement Board (interior only)
- Gypsum Plaster (10' height maximum) without wire lath
- Gypsum Wallboard (10' height maximum without wire lath)
- Exterior grade plywood with wire lath
- Cementitious Backer Board
- In compliance with 2015 International Building Code® (IBC) and 2015 International Residential Code® (IRC).







**MAILING ADDRESS
+ SHOWROOM**

8585 123 Street
Surrey, BC V3W 6E2

HOURS

Monday to Friday: 8:00 - 4:00
Saturday: 8:00 - 1:00

CONTACT US

T 604.590.5999
F 604.590.5909

sales@pacifcartstone
pacifcartstone.com